



UK Government

# Connect to Work

## Finding it hard to get into or stay in a job?

If you have a **disability, long-term health condition** or **complex non-health barrier** which has made getting into and staying in employment difficult, **Connect to Work** could help you.

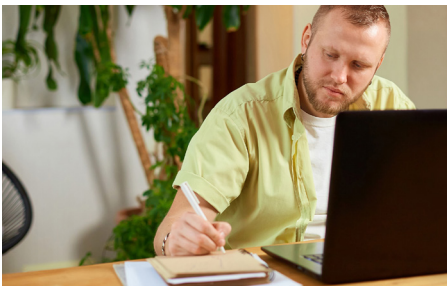
## How can Connect to Work support you? ▼

An employment specialist will work with you in:



## Am I eligible? ▼

- ✓ You must be **over 18 in England, (over 16 in Wales)** and entitled to live and work in the UK.
- ✓ You **do not need to** be on any type of benefit and it's completely voluntary.
- ✓ You must be **motivated to work**.



**TO FIND OUT MORE** and begin your journey, contact your Local Authority.

**CONNECT TO WORK**  
Funded by **UK Government**